

Oakebella

House & Land Packages



Image for illustration purposes only

From \$402,382

Lot 30 Oakebella Estate, Wellard



Frontage: 12.5m

Land Size: 313sqm

For more information please contact:

Dave Whitlock on 0439 933 805 or
dave.whitlock@contentliving.com.au

Content
LIVING

The Home Builders

- Family home with high 30c ceilings throughout
- Huge scullery,
- Home theatre,
- IT nook
- Double garage with remote sectional door
- Sliding robes to minor beds
- 1200 entry door
- 900mm cooking appliances.
- Essastone tops throughout
- 450x450 floor tiles to all living and passage areas (Imported from Italy or Spain choice of 20)
- Carpet to Beds and Home Theatre
- Fantastic new estate in Popular Wellard by award winning developer LWP.
- Other designs available or we can design a home to suit you.
- Rendered elevation and \$16,000 site-works allowance included
- Side and rear fencing
- Ecological front landscaping

Sales Office Hours:

1pm to 5pm Monday to Wednesday
1pm to 5pm Saturday & Sunday
1pm to 5pm Public holidays

e oakebella@lwpproperty.com.au
a Corner Bertram Road &
Johnson Road, Wellard
t 08 9297 9977
w oakebella.com.au

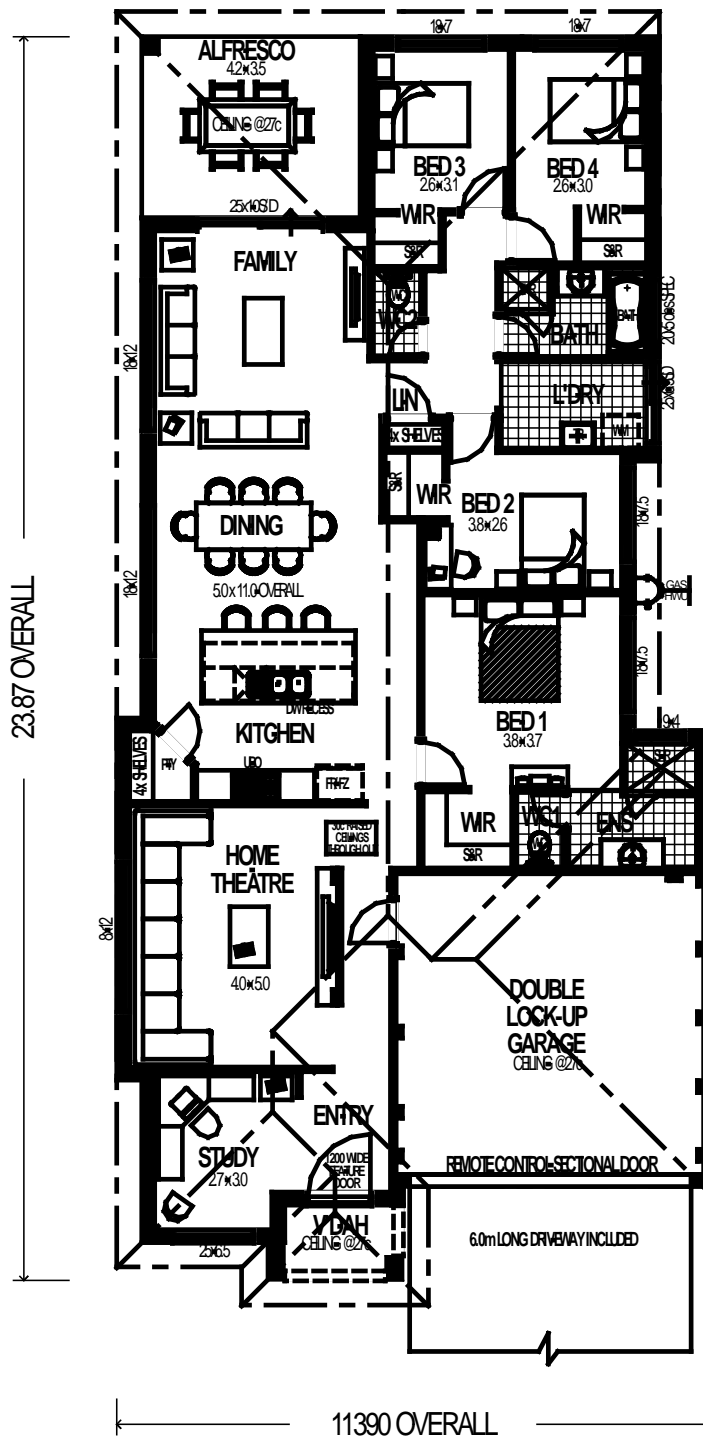
LWP+
ADVANTAGE

Join LWP Advantage today and enjoy exclusive benefits, priority notifications and great privileges.



Oakebella

House & Land Packages



Sales Office Hours:

1pm to 5pm Monday to Wednesday
1pm to 5pm Saturday & Sunday
1pm to 5pm Public holidays

e oakebella@lwpproperty.com.au
a Corner Bertram Road & Johnson Road, Wellard
t 08 9297 9977
w oakebella.com.au

LWP
ADVANTAGE

Join LWP Advantage today and enjoy exclusive benefits, priority notifications and great privileges.

