

Oakebella

House & Land Packages



Image for illustration purposes only

From \$359,590

Lot 126 Porrum Street



Land size: 403m² Lot front: 12.5m

For more information please contact:

Uliana Sherbina – 0404 221 204

uli@homestart.net.au



- Quality flooring throughout
- Window treatments throughout
- Paved Driveway and Alfresco
- Glass pivot doors to showers
- Technology package
- European appliances
- Designer mixers throughout
- Lifetime Structural Guarantee
- 6 Star Energy rating
- Soakwells & Crossover included
- Feature elevation to comply with Developer requirements
- Includes front yard landscaping
- Includes side and rear fencing
- Includes site works allowance of \$12,000

Sales Office Hours:

1pm to 5pm Monday to Wednesday

1pm to 5pm Saturday & Sunday

1pm to 5pm Public holidays

e oakebella@lwpproperty.com.au

a Corner Bertram Road &
Johnson Road, Wellard

t 08 9297 9977

w oakebella.com.au

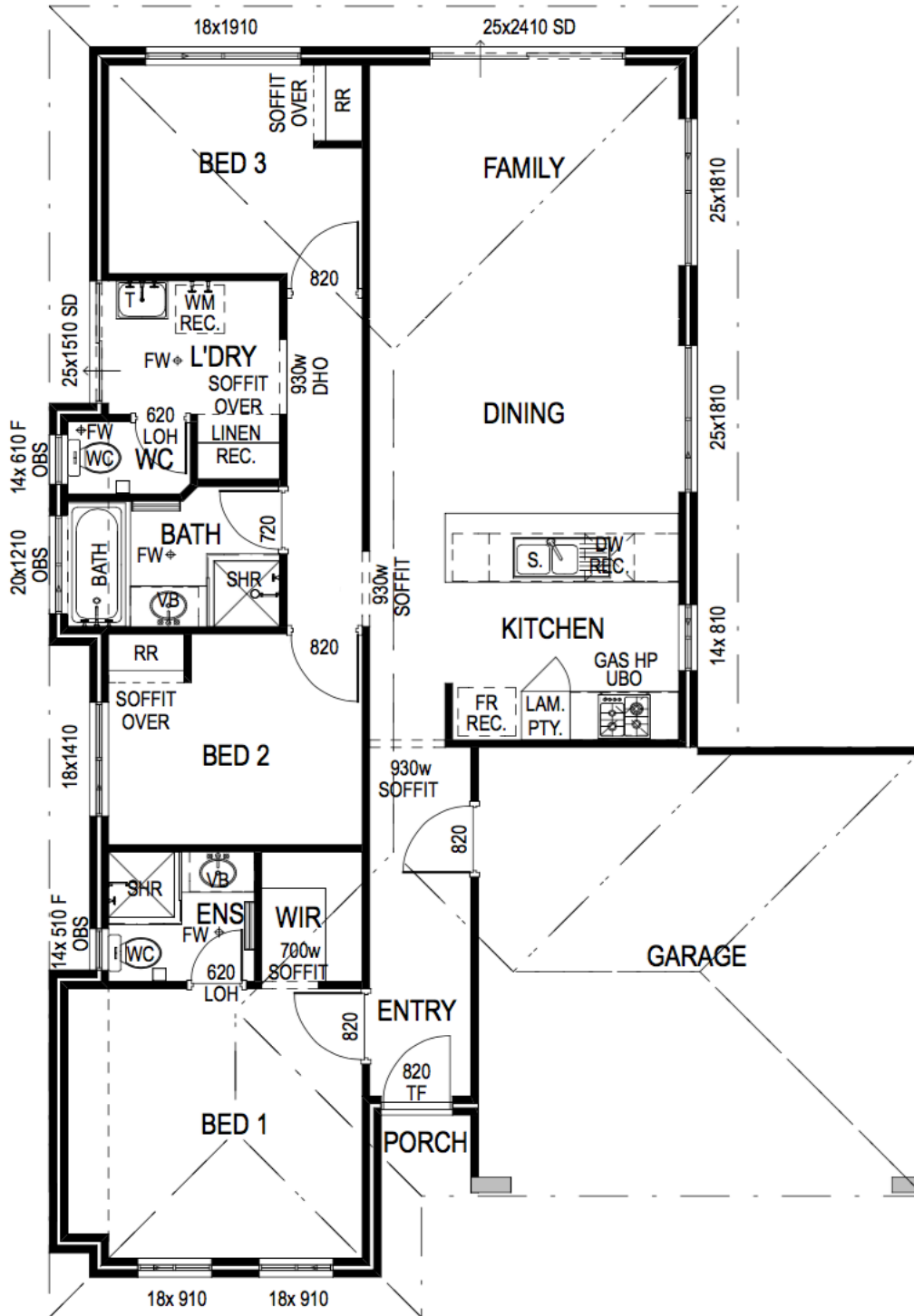
LWP+
ADVANTAGE

Join LWP Advantage today and
enjoy exclusive benefits, priority
notifications and great privileges.



Oakebella

House & Land Packages



Sales Office Hours:

1pm to 5pm Monday to Wednesday
1pm to 5pm Saturday & Sunday
1pm to 5pm Public holidays

e oakebella@lwpproperty.com.au
a Corner Bertram Road &
Johnson Road, Wellard
t 08 9297 9977
w oakebella.com.au

LWP+
ADVANTAGE

Join LWP Advantage today and
enjoy exclusive benefits, priority
notifications and great privileges.

