

Oakebella

House & Land Packages

The Guildford



For illustration purposes only

From \$406,791

Lot 109 Porrum Street



Frontage: 15

Land Size: 450m²



- Your new Commodore Home is backed by the might of Australia's largest residential builder, BGC, to guarantee your peace of mind.
- Brick for brick, Commodore Homes is unbeatable per square metre. Calculate The Rate and see for yourself!
- Enjoy Low Deposit and Zero Dollars upfront finance options, so no matter your circumstances Commodore Homes has a finance solution to fit thanks to our Loan Co Experts.
- We're so confident in the quality of our product, we guarantee our service and construction timeframes!
- Includes quality specification and site works allowance
- Feature Elevation to comply with Developer Requirements

For more information please contact:

Sales Rep: Dane Craig

Email Address: danec@commodorehomes.com.au

Contact Number: 0413 901 326

Sales Office Hours:

1pm to 5pm Monday to Wednesday

1pm to 5pm Saturday & Sunday

1pm to 5pm Public holidays

e oakebella@lwpproperty.com.au

a Corner Bertram Road & Johnson Road, Wellard

t 08 9297 9977

w oakebella.com.au

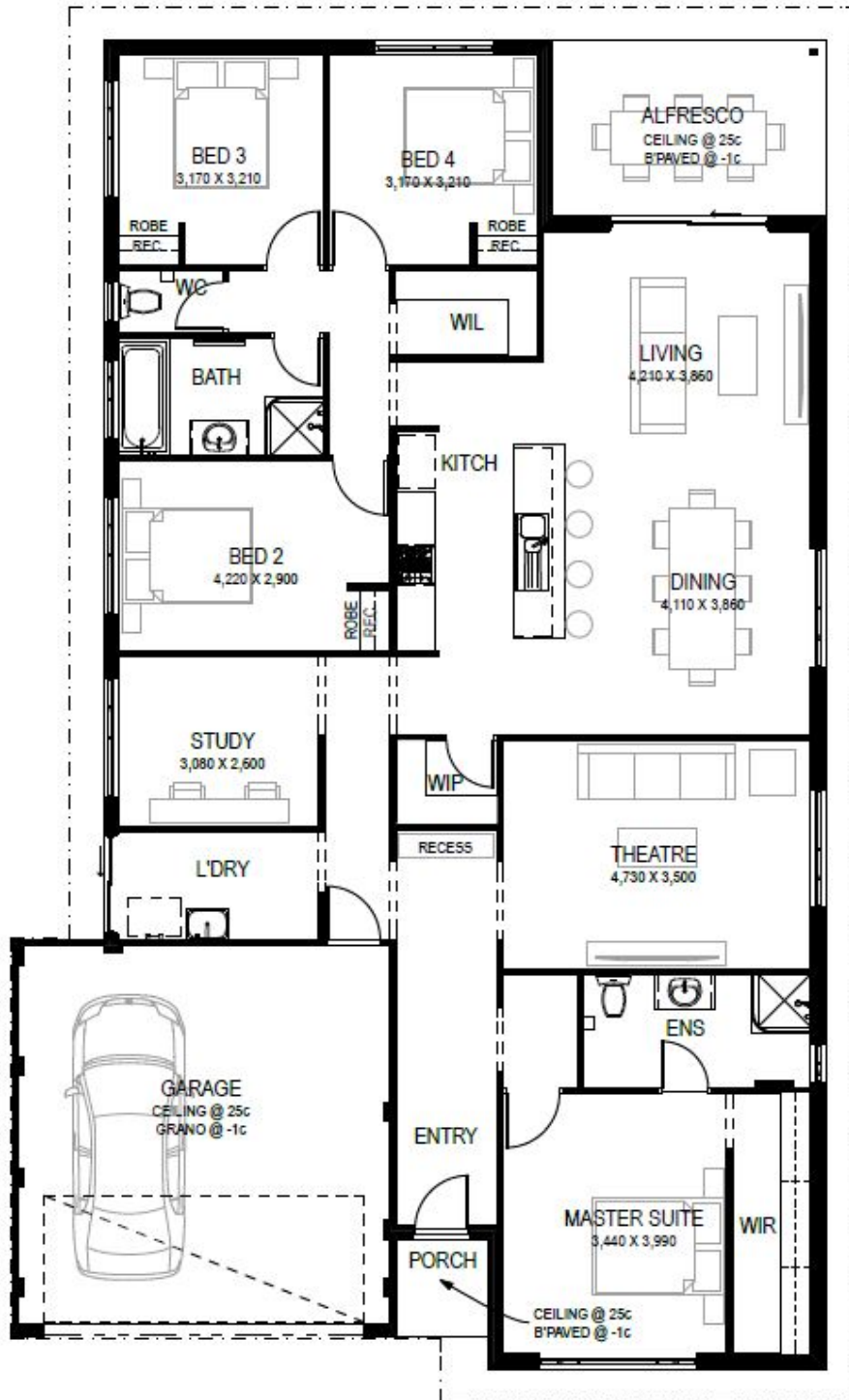
LWP+
ADVANTAGE

Join LWP Advantage today and enjoy exclusive benefits, priority notifications and great privileges.



Oakebella

House & Land Packages



Sales Office Hours:

1pm to 5pm Monday to Wednesday
1pm to 5pm Saturday & Sunday
1pm to 5pm Public holidays

e oakebella@lwpproperty.com.au
a Corner Bertram Road &
Johnson Road, Wellard
t 08 9297 9977
w oakebella.com.au

LWP
ADVANTAGE

Join LWP Advantage today and
enjoy exclusive benefits, priority
notifications and great privileges.

