

# Oakebella

## House & Land Packages



Image for illustration purposes only

# From \$324,690

## Lot 104 Porrum Street



Land size: 315m<sup>2</sup>

Lot front: 10.5m

**For more information please contact:**

Uliana Sherbina – 0404 221 204

uli@homestart.net.au



- Quality flooring throughout
- Window treatments throughout
- Paved Driveway and Alfresco
- Glass pivot doors to showers
- Technology package
- European appliances
- Designer mixers throughout
- Lifetime Structural Guarantee
- 6 Star Energy rating
- Soakwells & Crossover included
- Feature elevation to comply with Developer requirements
- Includes front yard landscaping
- Includes side and rear fencing
- Includes site works allowance of \$12,000
- \*Includes FHOG rebate of \$10,000

**Sales Office Hours:**

1pm to 5pm Monday to Wednesday

1pm to 5pm Saturday & Sunday

1pm to 5pm Public holidays

**e** oakebella@lwpproperty.com.au

**a** Corner Bertram Road &  
Johnson Road, Wellard

**t** 08 9297 9977

**w** oakebella.com.au

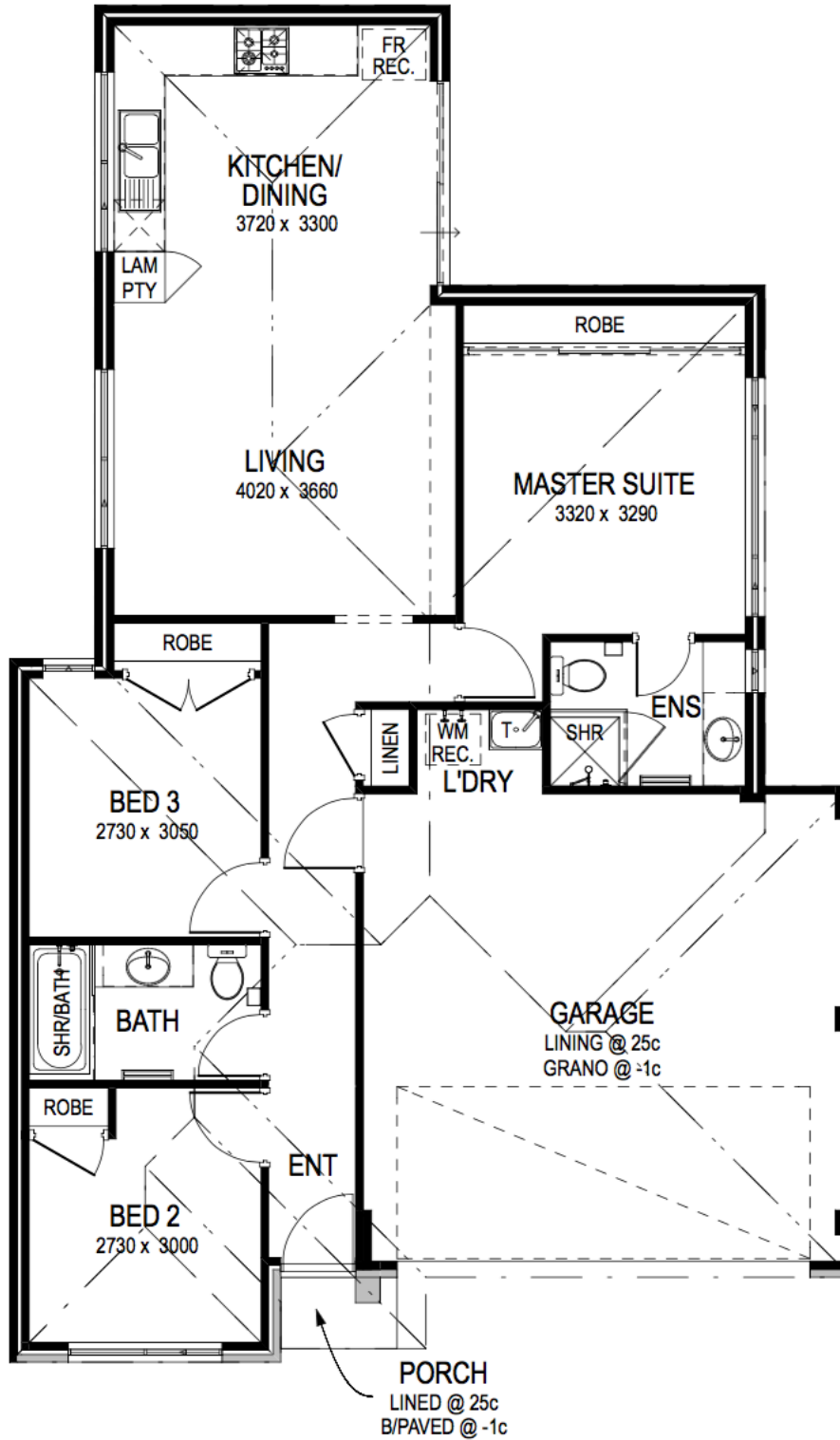
**LWP+**  
**ADVANTAGE**

Join LWP Advantage today and  
enjoy exclusive benefits, priority  
notifications and great privileges.



# Oakebella

## House & Land Packages



### Sales Office Hours:

1pm to 5pm Monday to Wednesday  
1pm to 5pm Saturday & Sunday  
1pm to 5pm Public holidays

e oakebella@lwpproperty.com.au  
a Corner Bertram Road &  
Johnson Road, Wellard  
t 08 9297 9977  
w oakebella.com.au

**LWP +**  
**ADVANTAGE**

Join LWP Advantage today and  
enjoy exclusive benefits, priority  
notifications and great privileges.

