

# The Reserve House & Land Packages



**\$585,262**

Land size: 544m<sup>2</sup>

Lot frontage: 17m

## The Aspire

- Ducted reverse cycle air conditioning
- Internal wall painting
- Carpets and tiling
- 31c ceilings to Entire House
- Large kitchen with additional bench space and cupboards
- Large double shower
- Double vanity basin to ensuite
- Four panel sliding door to dining/living/alfresco
- Sliding robe doors to all minor bedrooms
- Pedestal basin to powder room
- NBN 3 point pack
- Includes side and rear fencing
- Includes front yard landscaping
- Includes site works allowance
- Includes BAL allowance
- Based on land price of \$325,000 (before \$25,000 LWP bonus taken off the build of your new home)

## Lot 1166 Traviata Crescent



### For more information please contact:

Peter Platell – 0438 438 208  
pplatell@dalealcock.com.au



### Sales Office Hours:

9am to 5pm Monday to Friday  
10am to 5pm Saturday  
1pm to 5pm Sunday  
1pm to 5pm Public holidays

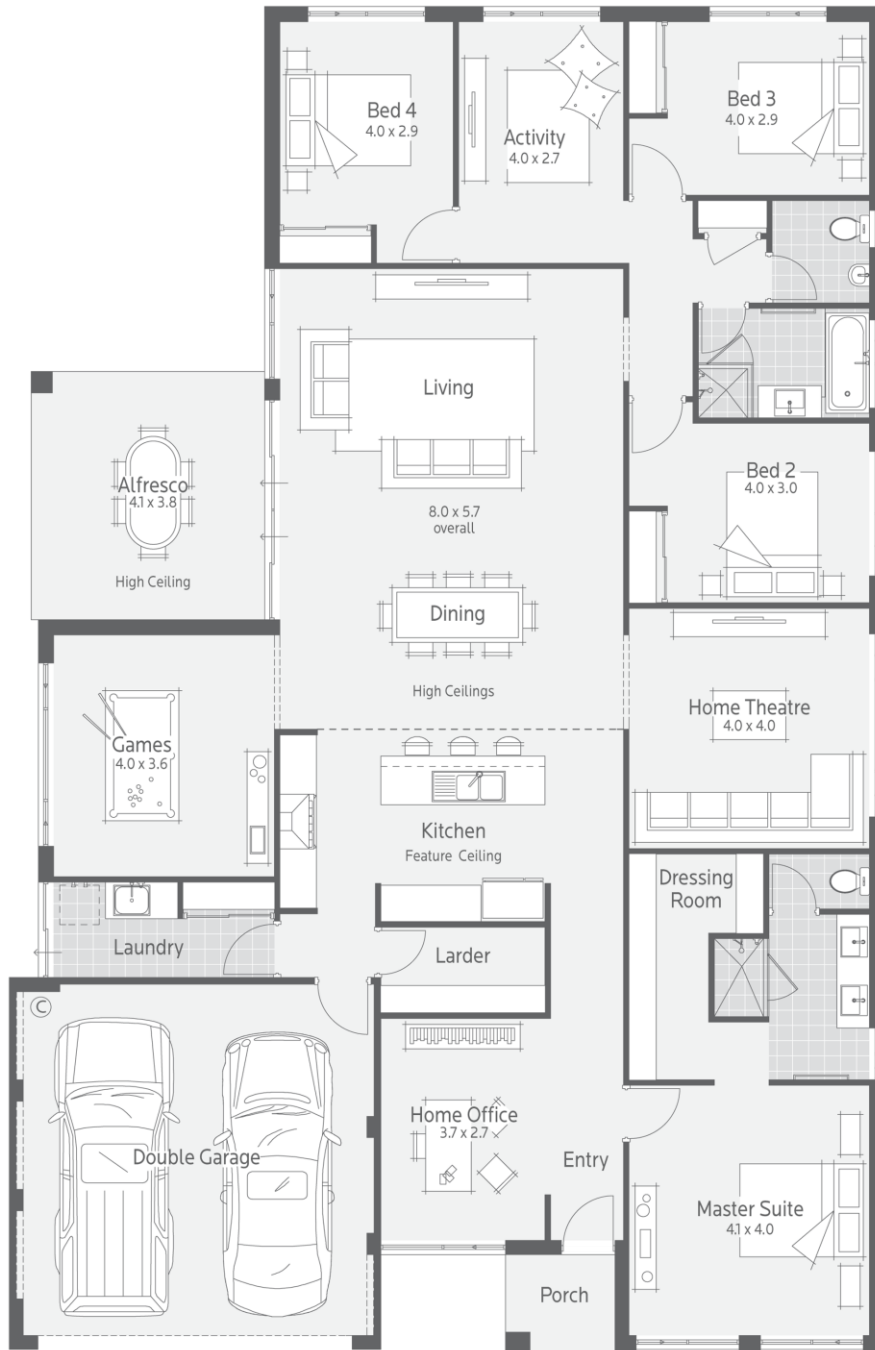
e vinesland@lwpproperty.com.au  
a 34 Main St, Ellenbrook  
t 08 9297 9999  
w vinesland.com.au

LWP+  
ADVANTAGE

Join LWP Advantage today and enjoy exclusive benefits, priority notifications and great privileges.

the  
reserve  
at the vines

# The Reserve House & Land Packages



**Sales Office Hours:**

9am to 5pm Monday to Friday  
10am to 5pm Saturday  
1pm to 5pm Sunday  
1pm to 5pm Public holidays

**e** vinesland@lwpproperty.com.au  
**a** 34 Main St, Ellenbrook  
**t** 08 9297 9999  
**w** vinesland.com.au



Join LWP Advantage today and enjoy exclusive benefits, priority notifications and great privileges.

